

**SOUTH SIDE SCHOOL
VISUAL ARTS PACKET**

**BALANCE
AND
SYMMETRY
IN
ART**



South Side School

Growing Together, Touching Tomorrow.

WHAT IS BALANCE AND SYMMETRY IN ART?

Balance in art is just what it sounds like; it is the sense of stability in a work of art. To create balance in art, artists combine the visual components to ensure that one part of the artwork doesn't completely overshadow the rest. Each choice made by the artist is a deliberate one in order to ensure equilibrium and balance in the art. Artists create this pleasing effect using the different types of symmetry in their art work; Radial Symmetry, Bilateral Symmetry, and Asymmetry.

WHAT IS IN THIS PACKET?

A step by step lesson on each of the three types of symmetry.

Drawing Paper to complete each lesson. I included 2 pieces for each lesson in case a parent or sibling would like to participate.

Three worksheets that can be completed and colored.

This packet will also be available on my webpage on the South Side School website.

My school webpage will also include links to learn more about how artists create balance using symmetry in their art work.

I would love to post your finished work on the South Side School Art Gallery which is on my webpage. Email me a picture of you art at laclairm@jcschools.org and I will post them.

Radial Symmetrical Balance

What is Radial Symmetry?

When parts of an object or picture radiate from a central point.

Example: Flower 

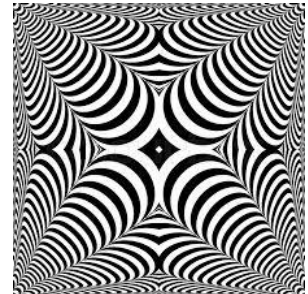
Examples of Radial Symmetry in Art



M C Escher



Islamic Design



Op Art

Examples of Radial Symmetry in Nature



Snowflake



Grapefruit



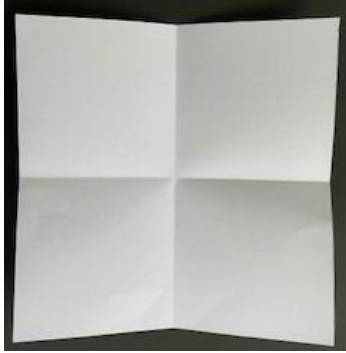
Sea Urchin

Radial Symmetry Design

Use **line**, **shape**, and **pattern** to create your own interesting radial symmetry design.

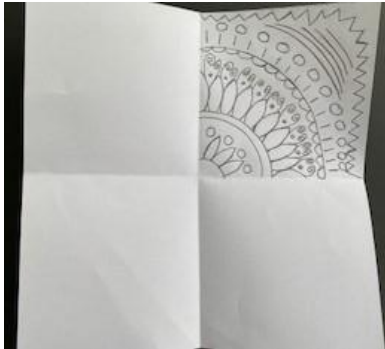
INSTRUCTIONS

Step 1



Fold square paper into quarters.

Step 2



Use a pencil to draw a design in ONE square.

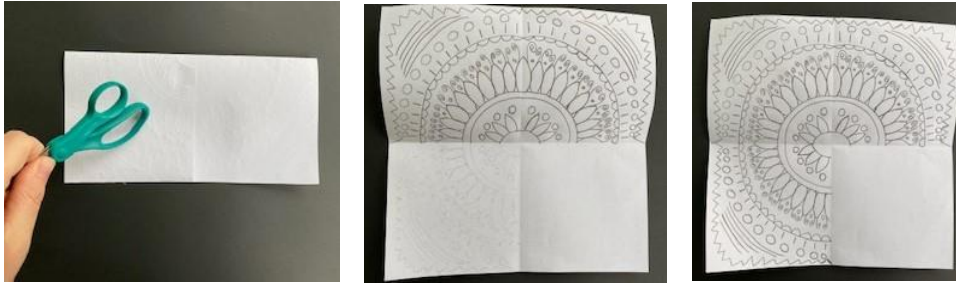
Step 3



Fold paper over and rub back. The design will be transferred lightly on other side.

Trace over design in 2nd square with pencil.

Step 4



Fold paper over and rub back. The design will be transferred lightly on other side.

Trace over design in 3rd square with pencil.

Step 5



Fold paper over and rub back. The design will be transferred lightly on other side.

Trace over design in 4th square with pencil.

Step 6



Trace completed design with black marker or crayon.

Step 7 Color your beautiful Radial design!!!!

Email me a photo of your work at laclairm@jcschools.org so I can post it to the SouthSide Art Gallery.

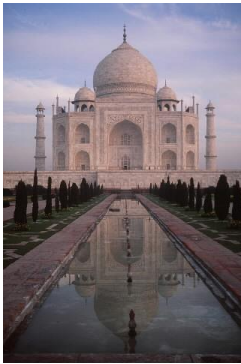
Bilateral Symmetrical Balance

What is Bilateral Symmetry?

When each half of the image or object is identical or very similar.

Example: Butterfly 

Examples of Bilateral Symmetry in Art



Taj Mahal



Diego Rivera *Flower Day*



African Mask

Examples of Bilateral Symmetry in Nature



Beetle



Butterfly



Maple Leaf

Bilateral Symmetry Design

Use line, shape, and pattern to create your own interesting bilateral symmetry design.

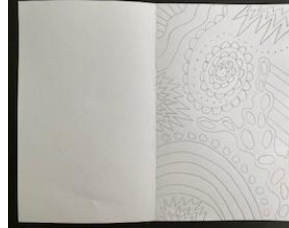
INSTRUCTIONS

Step 1



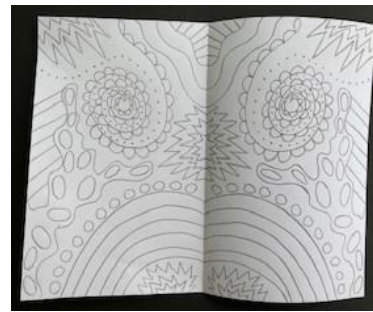
Fold paper in half.

Step 2



Draw a design on one of the halves.

Step 3



Fold paper over and rub back. The design will be transferred lightly on other half.
Trace over design on other half with pencil.

Step 4



Trace completed design with black crayon or marker.

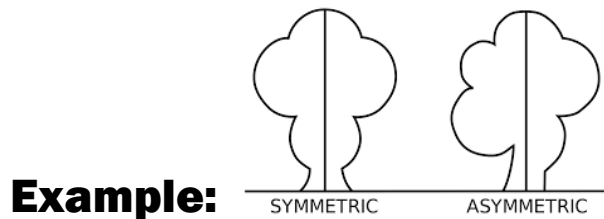
Step 5 Color your beautiful Symmetrical design!!!!

Email me a photo of your work at laclairm@jcschools.org so I can post it to the SouthSide Art Gallery.

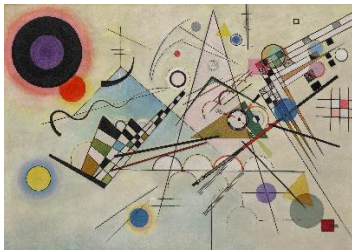
Asymmetrical Balance

What is Asymmetry?

When an object or picture has unidentical halves.



Examples of Asymmetry in Art



Wassily Kandinsky



Walt Disney Concert Hall



The Great Wave off Kanagawa

Examples of Asymmetry in Nature



Tree



Fiddler Crab



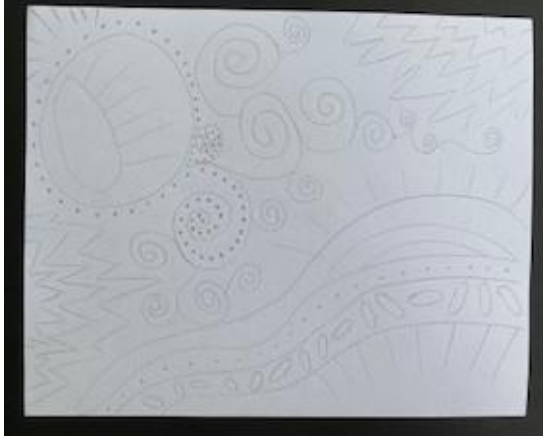
Red Mulberry Leaf

Asymmetrical Design

Use **line**, **shape**, and **pattern** to create your own interesting asymmetrical design.

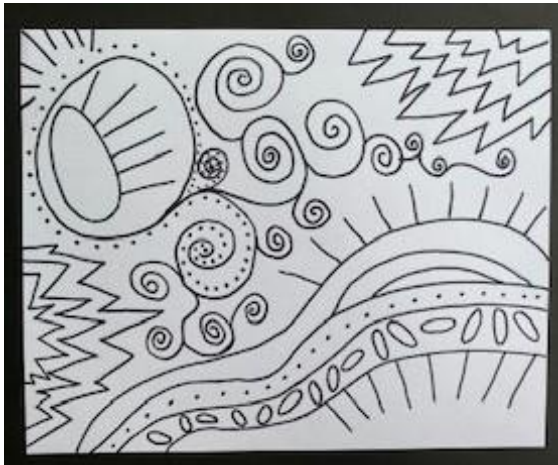
INSTRUCTIONS

Step 1



Use a pencil to draw a design that shows how each half of the paper is different but has equal visual weight.

Step 2

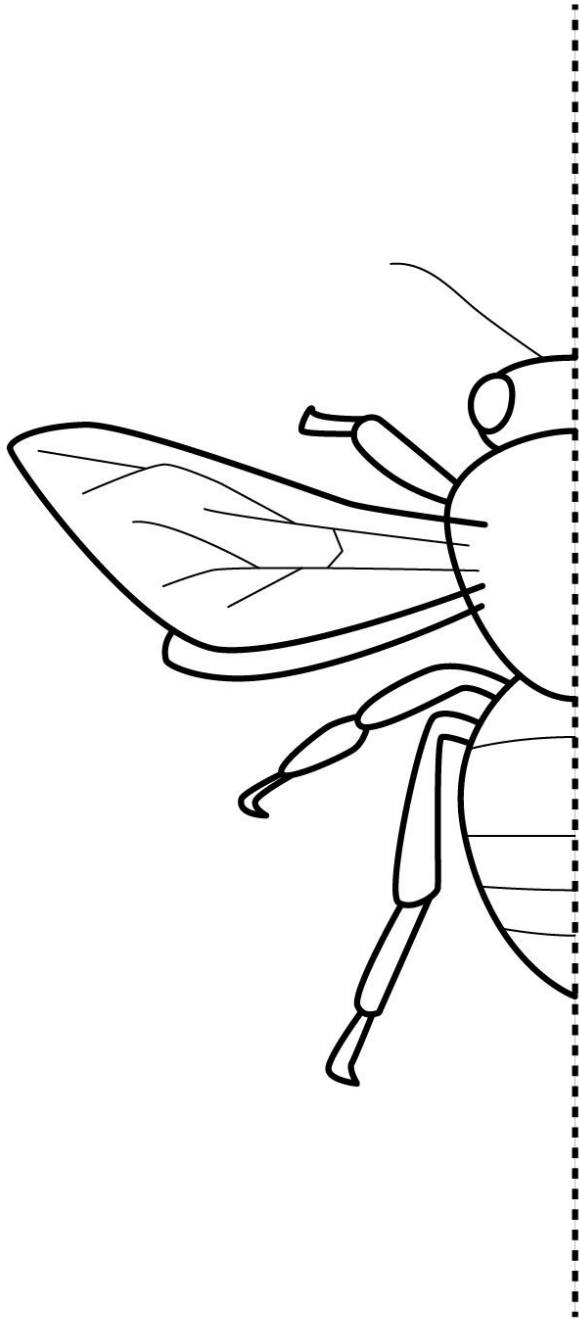


Use a black crayon or marker to trace your completed design.

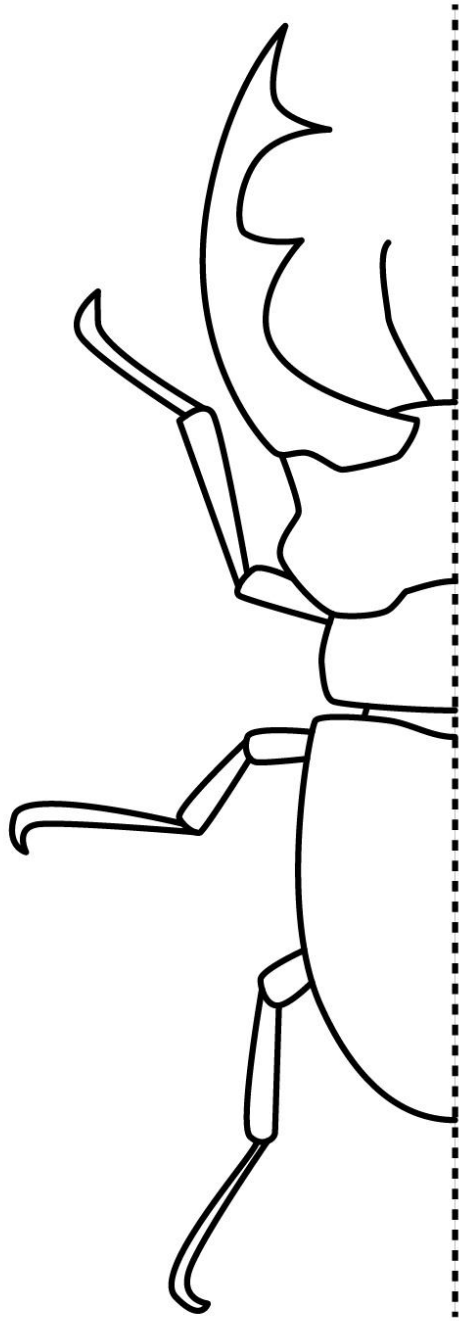
Step 3

Color your beautiful Asymmetrical design!!!!

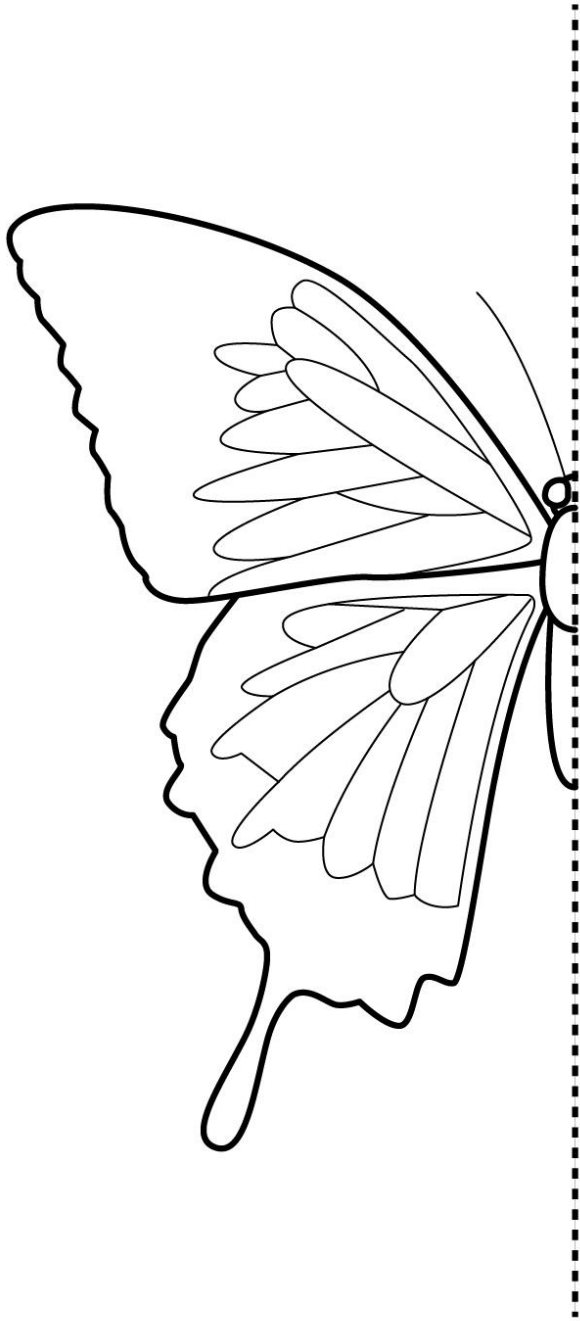
Email me a photo of your work at laclairm@jcschools.org so I can post it to the SouthSide Art Gallery.



symmetry coloring page
bee



symmetry coloring page
beefle



symmetry coloring page
butterfly